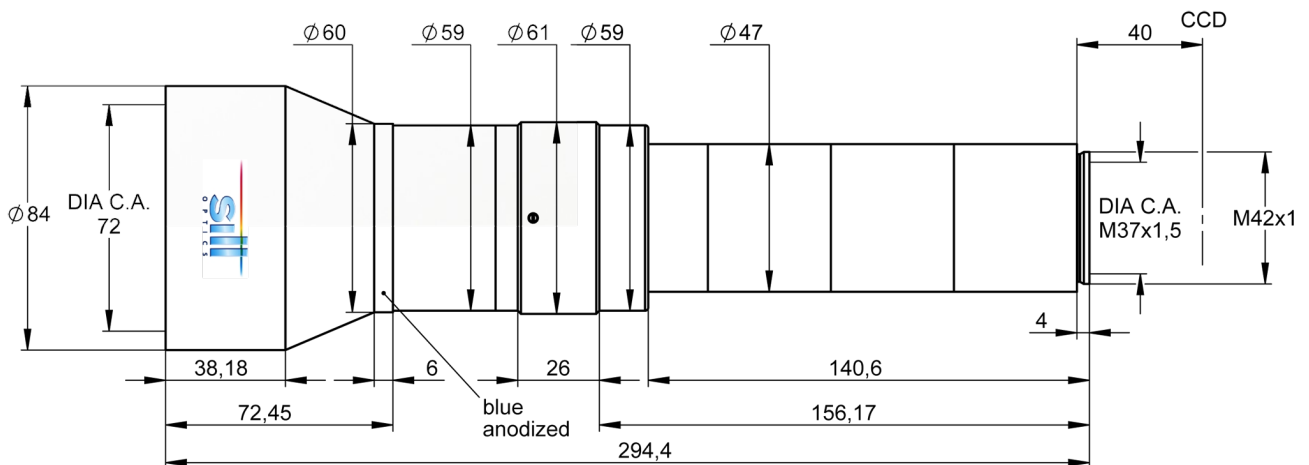
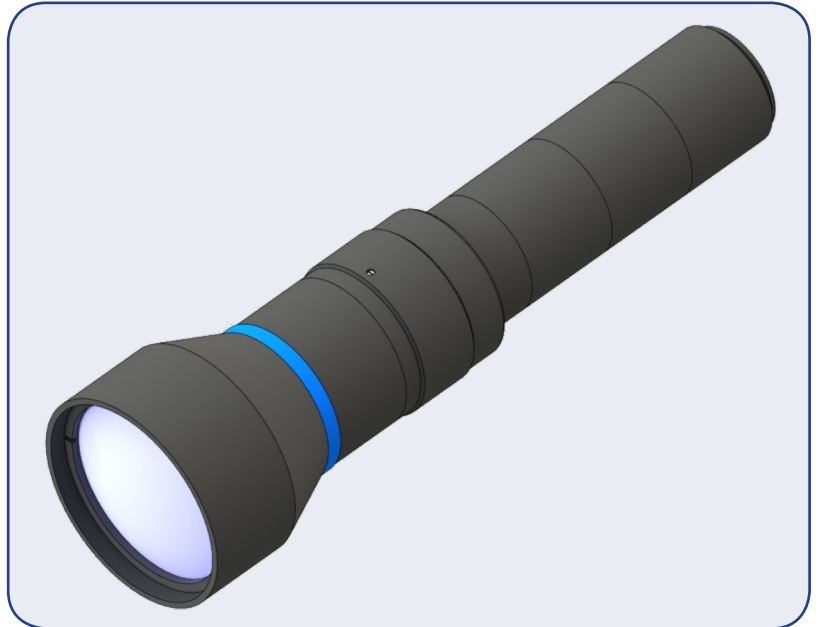


DATA SHEET

S5LPJ0066/M42

Correctal® TL72/1.5
telecentric lens
with M42-thread



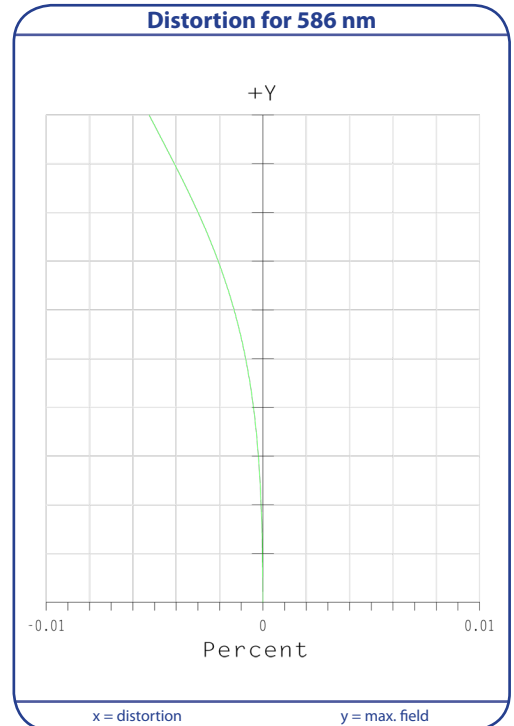
outline drawing

other adapter on special request

S5LPJ0066/M42

Correctal® TL72/1.5 telecentric lens with M42-thread

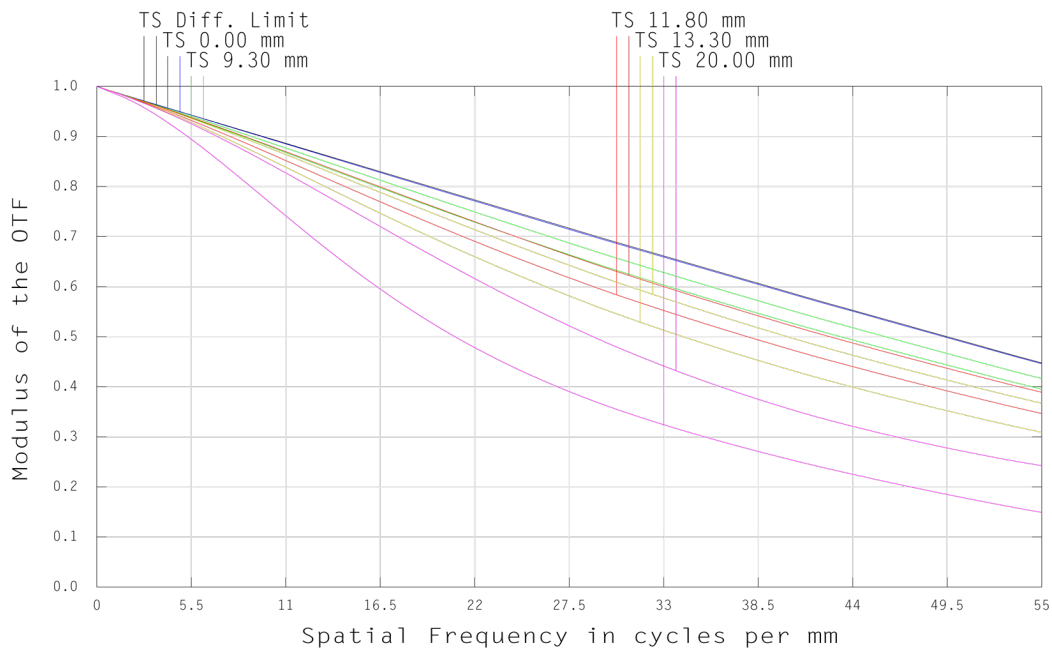
Specifications	
part number	S5LPJ0066/M42
magnification (+/-5%)	1.5
working distance [mm] (+/-2%)	123.0
max. object size [mm] at a chip size of [mm]	8.5 x 6.4 12.8 x 9.6 (1")
distorsion [%]	0.02
max. object size [mm] at a chip size of [mm]	19.0 28.6
distorsion [%]	0.03
max. object size [mm] at a chip size of [mm]	28.8 43.3*)
distorsion [%]	0.04
max. object size [mm] at a chip size of [mm]	40.0 60.0**)
distorsion [%]	0.05
numerical aperture	0.06
max. outside-Ø [mm]	84.0
length [mm] (+/-2%)	290.4
weight [kg]	4.3



T.. Tangential

MTF for various object heights at 586nm

S.. Sagittal



*) with M52x1 thread **) with M72x1 thread