

# DATA SHEET

## S5LPJ4299

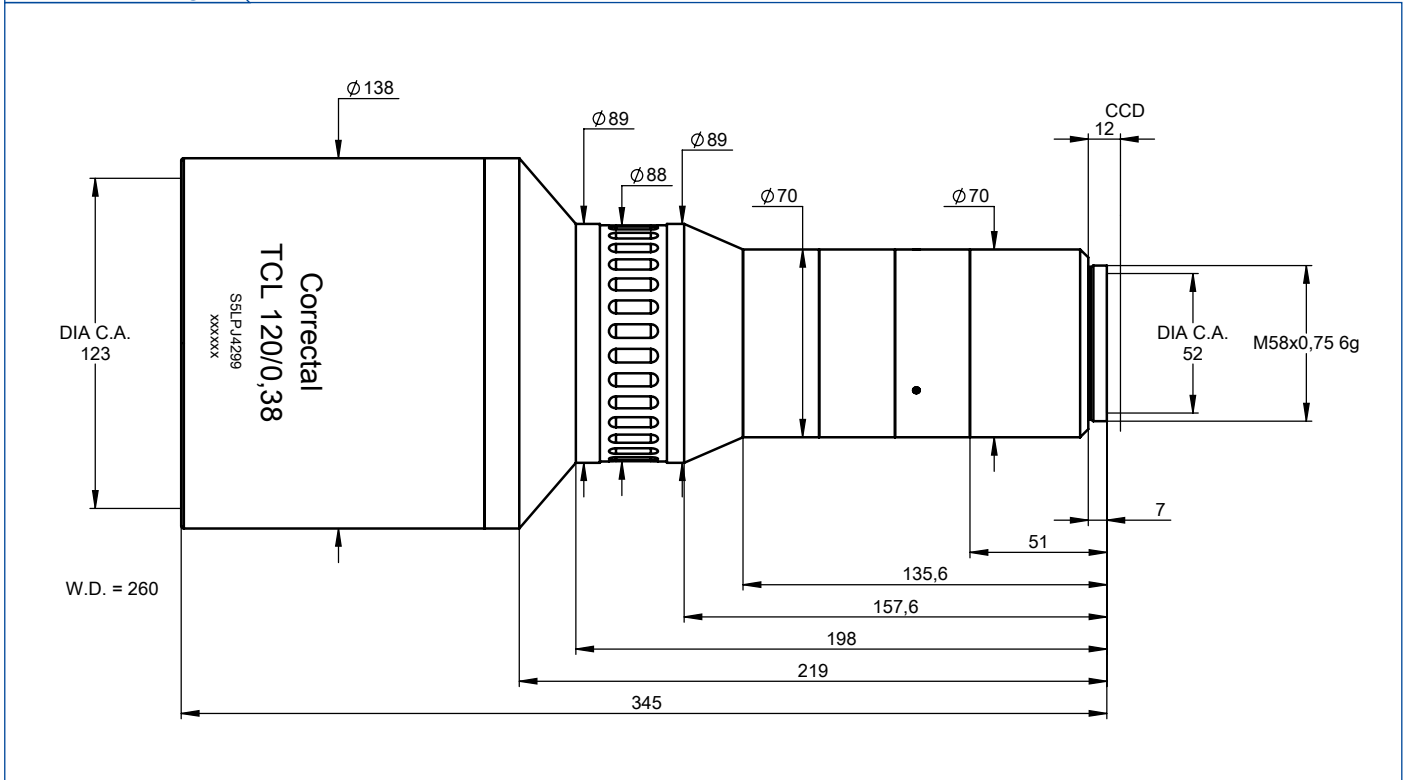
### Correctal TCL 120/0.38 M58

- standard telecentric lenses
- bi-telecentric
- with M58x0.75
- fixed iris



illustration only

#### outline drawing

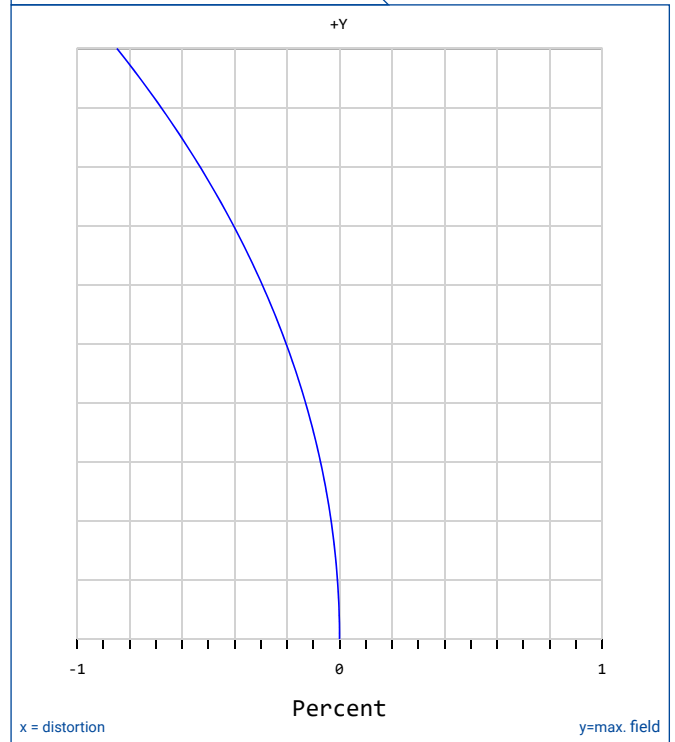


# DATA SHEET

## specifications

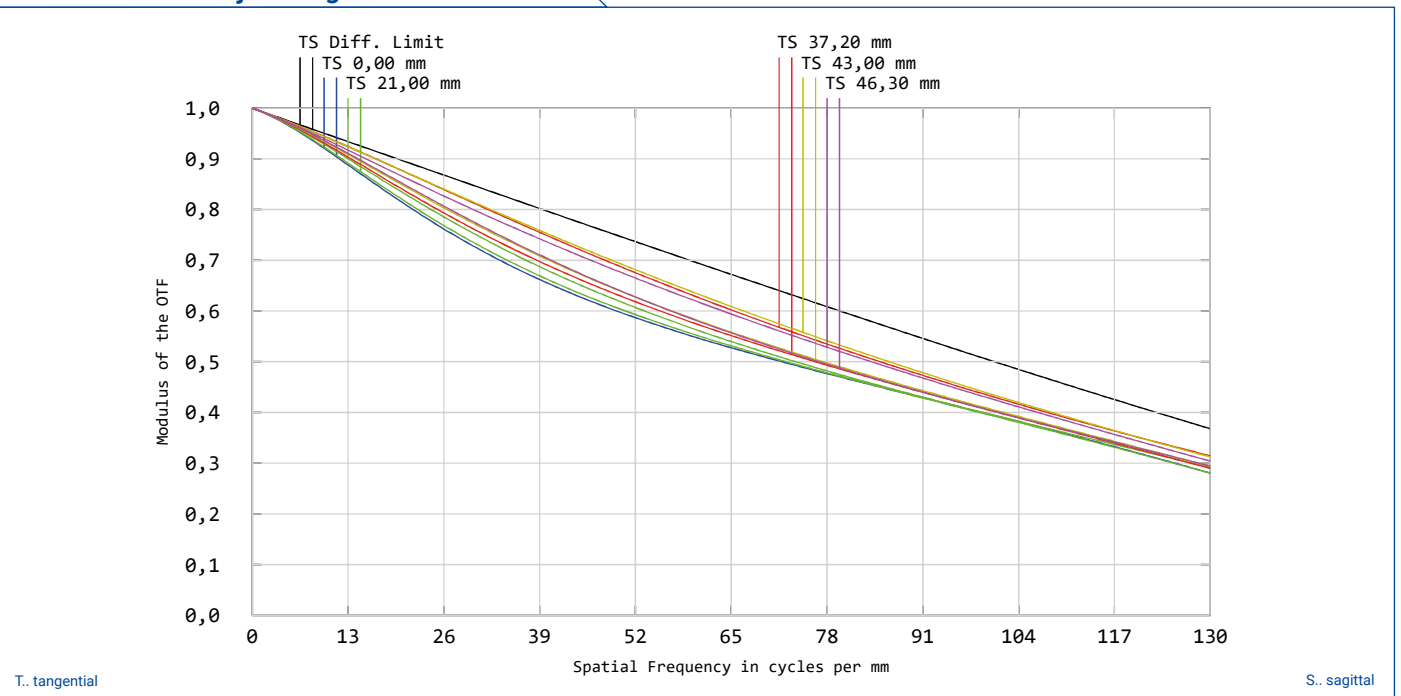
article number	S5LPJ4299
wavelength range [nm]	450 - 700
design wavelength [nm]	586
magnification (+/-5%)	0.380
working distance [mm] (+/-2%)	260.0
object size [mm] at a chip size of [mm]	52.4 x 52.4 19.9 x 19.9 (28.2)
object size [mm] at a chip size of [mm]	60.5 x 60.5 23.0 x 23.0 (32.6)
object size [mm] at a chip size of [mm]	65.0 x 65.0 24.7 x 24.7 (35.0)
max. telecentricity error [°]	0.01
recommended numerical aperture	0.028
max. distortion [%]	0.37
weight [kg]	3.3
flange back distance [mm]	12.00
accessory	S5SET0020/070 (lens mount)

## Distortion for 586 nm



## remarks

## MTF for various object heights at 586 nm



graphs and data given by design